



Faneuil Hall, Boston, MA

- Thin-film, intumescent fire protective paint for wood, sheet rock, and other interior substrates.
- Attractive water-based architectural finish rated for up to two hours fire protection.
- Complies with all building codes for use in new construction, historic restoration, defective construction, and many other applications.
- UL Classified, manufactured under UL's stringent Follow-up Service, UL tested for resistance to high humidity, heat aging, UV exposure, and scrub resistance for interior products.

Distributed By:
KBS Passive Fire Pty. Ltd.
Australia - Canada - Saudi Arabia
P: +61 2 9969 7100
F: +61 2 9969 7200
P: +1 604 941 1001
F: +1 604 941 1029
E: mail@kbspassivefire.com
W: www.kbspassivefire.com



Introducing Albi Clad FP— The Decorative Interior Finish with Superior Fireproofing Protection

Our Albi Clad TF thin-film intumescent fireproofing for interior structural steel has gained high marks from architects, construction professionals and fire-safety officials all over the world. Now Albi Clad FP gives you the same fireproofing protection — but can be applied to other interior surfaces. Wood, wallboard, or virtually any kind of surface can now be coated with Albi Clad FP to get an attractive interior finish with superior fire resistant protection.

PROVEN PERFORMANCE

Albi Clad FP is the latest in a long line of innovative products from Albi — the first name in fireproofing materials for over four decades. Unlike ordinary fireproofing, Albi Clad FP is applied at minimum thickness for a smooth architectural finish. Lightweight and ultra thin, Albi Clad FP gives you long-term protection, outstanding hardness and incomparable durability.

ALBI CLAD FP ADVANTAGES

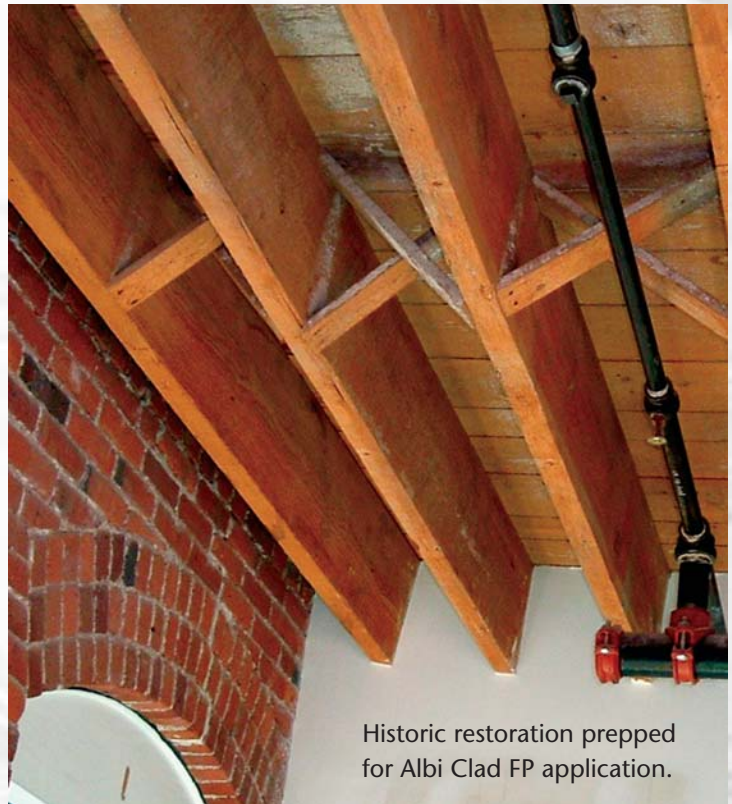
- An attractive interior finish that conforms to building codes and insurance requirements for fireproofing.
- UL Classified.
- Maintains contour of the substrate, and preserves details.
- Architectural, decorative finish.
- Ideal for both new construction and historic renovations.
- Complies with all VOC air quality standards.
- UL tested for resistance to high humidity, aging, industrial atmosphere (CO_2 / SO_2), chlorine and washing.

EASY TO APPLY

Albi Clad FP is applied directly from the shipping container using standard or airless spray equipment. Fire resistance specifications determine the thickness of the coating. NOTE: Albi Clad FP must be applied by qualified, factory-trained applicators. Contact Albi for specific application parameters.

HISTORIC RENOVATIONS, RESTORATIONS OR PRESERVATION

Albi Clad FP is ideal for renovating historical buildings. Not only does its attractive finish help maintain and retain the historic character of older buildings that make available tax credits, it provides uncompromising fire safety as well.



Historic restoration prepped for Albi Clad FP application.

DEFECTIVE GYPSUM BOARD FIRE SEPARATION WALL CONSTRUCTION

- GWB incorrectly attached
- GWB installed horizontally
- Non-staggered joints
- Joints on both sides aligned
- GWB applied to 1 side of demising wall only

Construction	Fire Test Report #	Film Thickness	Fire Resistance Rating
Rough Cut 2x10 Floor Joist Assembly	WFCi Report # 04042 (A)	40 mils	1 Hour (ASTM E-119)
Rough Cut 2x10 Floor Joist Assembly finished with tin ceiling panels	WFCi Report # 04042 (B)	40 mils	1 Hour (ASTM E-119)



When the ultimate in fire protection plus a clean crisp architectural look is required use Albi Clad FP.

ALBI CLAD FP APPLICATIONS

Albi Clad FP is ideal for interior wood columns, beams, trusses and other exposed structural elements. Typical installations include:

- Fire separation walls and ceilings
- Nursing Homes
- Warehouses
- New Wood Construction
- School Buildings
- Condominiums and Apartments
- Historic Renovations
- Loft Conversions
- Defective Construction

PHYSICAL PROPERTIES

PROPERTY	VALUE
Dry Applied Density	85 PCF
Hardness	45-50
Compressive Strength	300 psi
Cohesive/Adhesion Strength	190 psi (cohesive failure)
Abrasion Resistance	0 grams loss
Impact	0.77-ft lbs./inch of notch
Weight per Gallon	11.90 + 0.20 lbs./gals
% Solids by weight	70% + 2.0%
Flame Spread	2 - Class A
Smoke Developed	5 - Class A



•See complete marking on package



Made in the USA

Other Albi FP Literature

- Albi Clad FP Long Form Guide Specification
- Albi Fireproofing Catalog
- Albi Clad FP Field Application Manual

Also inquire about these other fireproofing products from Albi.

Albi Clad 800

Exterior grade intumescent fireproofing, withstands severe weathering and abuse

Albi DriClad

Low-cost, uniform density mineral board that installs dry year-round

Albi Clad TF

Water based, thin-film intumescent fireproofing for exposed interior structural steel

For more information about any Albi product visit our website at www.albi.com

ALBI MANUFACTURING

For more than four decades, Albi fireproofing materials have demonstrated superior performance and reliability under a range of extreme environments worldwide.

Our proprietary, UL Classified products also meet global building codes and insurance requirements. Lightweight Albi materials provide long-term protection, outstanding durability, aesthetic properties and are completely free from asbestos.



Albi Manufacturing Division of StanChem, Inc.

401 Berlin Street
East Berlin, Connecticut USA 06023
Tel: (860) 828-0571
Fax: (860) 828-3297
www.albi.com

Citex Ltd. ¹

71-75 High Street
Chislehurst, Kent
United Kingdom BR7 5AG
Tel / Fax: 44 181 467-2606

¹A wholly-owned subsidiary of StanChem, Inc.