



DriClad  
Parking Garage  
Methuen, MA  
Photo: Jim Lundell

- Low-cost, uniform density & thickness mineral board
- Installs dry without disruption to other trades
- Year-round application without work-area enclosure
- UL Classified for Up to 3 hours

Distributed By:  
KBS Passive Fire Pty. Ltd.  
Australia - Canada - Saudi Arabia  
P: +61 2 9969 7100  
F: +61 2 9969 7200  
P: +1 604 941 1001  
F: +1 604 941 1029  
E: [mail@kbspassivefire.com](mailto:mail@kbspassivefire.com)  
W: [www.kbspassivefire.com](http://www.kbspassivefire.com)



## DESCRIPTION

Albi DriClad is based on naturally occurring basalt volcanic rock. The patented manufacturing process transforms crushed volcanic rock into a lightweight, durable board from finely spun threads bound with a proprietary resin. For use on structural steel in lieu of conventional, soft fireproofing, this material offers excellent fire safety properties. It is supplied as 4' x 6' foot boards.



## ALBI DRICLAD ADVANTAGES

- Noncombustible
- High insulating value
- No steel surface preparation required
- High sound absorption
- No leachable chloride content
- Non-capillary and non-hygroscopic
- Completely free of asbestos, CFCs and HFCs
- Chemically inert
- Installs dry without disruption to other trades
- Applies year-round in all weather conditions
- Factory-controlled density and thickness
- Light weight and low-cost

## WHERE TO SPECIFY

Specify Albi DriClad to provide fire resistance for structural steel on both new and retrofit construction. DriClad is compatible with all materials with which it is likely to be used in normal industrial and commercial applications. It can also be applied to a wide range of nonferrous metals as well as elements such as walls, ventilation ducts, doors, and conduit. DriClad is available in a range of thicknesses beginning at 7/8".

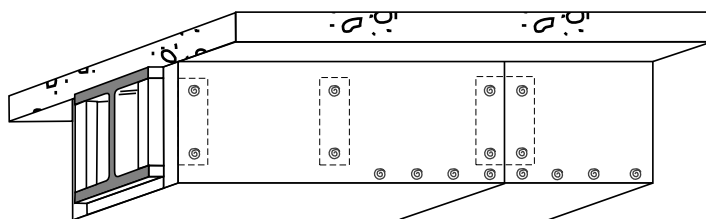
## PROVEN PERFORMANCE

The superior performance of Albi DriClad fireproofing materials has been verified under a wide range of applications throughout the world. DriClad is manufactured to the most stringent quality criteria and conforms to, or exceeds, all relevant American and worldwide standards. DriClad is classified as noncombustible in accordance with ASTM E136. Since DriClad has a low binder content, it shows zero flame spread and smoke development, per ASTM E84.

| Typical System   | Hourly Rating | Thickness (dft) | Design Number |
|--|---------------|-----------------|---------------|
| Columns  | 1             | 3/4"            | X313          |
|  | 1.5           | 1-1/4"          | X313          |
|  | 2             | 2-1/4"          | X313          |
| Beams - Roof / Ceiling<br>(Restrained & Unrestrained)              | 1             | 3/4"            | S301          |
|  | 1.5           | 3/4"            | S301          |
|  | 2             | 1-1/2"          | S301          |
| Beams - Floor / Ceiling<br>(Restrained & Unrestrained)             | 1             | 3/4"            | N307          |
|  | 1.5           | 3/4"            | N307          |
|  | 2             | 1-1/2"          | N307          |
| Unprotected Roof / Ceiling<br>Assembly (Restrained & Unrestrained) | 1             | 3/4"            | P930          |
|  | 1.5           | 3/4"            | P930          |
|  | 2             | 1-1/2"          | P930          |
| Protected Roof / Ceiling Assembly<br>(Restrained & Unrestrained)   | 1             | 1"              | P301          |
| Floor / Ceiling Assembly<br>(Restrained)                           | 1             | 3/4"            | D929          |
|  | 1.5           | 3/4"            | D929          |
|  | 2             | 3/4"            | D929          |
| Floor / Ceiling Assembly<br>(Unrestrained)                         | 1             | 3/4"            | D929          |
|  | 1.5           | 3/4"            | D929          |
|  | 2             | 1-1/2"          | D929          |
| Protected Floor / Ceiling Assembly<br>(Restrained & Unrestrained)  | 2             | 1"              | D303          |
| Floor / Ceiling Assembly   | 3             | 1"              | G301          |

## EASY APPLICATION

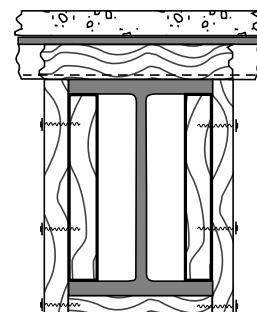
Albi DriClad installs without the adhesion and compatibility concerns associated with spray applied soft fireproofing. Although DriClad is easily cut with a knife or hand saw, the most efficient cutting device is a table saw. A knife may be used to cut around obstructions and structural members. Strips 4" wide x 1-1/2" minimum thickness are fit tightly between the top and bottom flanges 24" on center. Material is then cut and installed to box in the steel. AlbiScrews™ fasten the material 6" on center. DriClad is shipped on pallets in stretch-wrapped polyethylene for ease of handling and short term storage.



AlbiScrews @ 6" centers

## TYPICAL INSTALLATIONS

- Commercial Buildings
- Industrial Plants
- School Gymnasiums
- Warehouses
- Parking Garages
- Power Plants
- Elevator Shafts



Profiled metal deck/roof over steelwork

## PHYSICAL PROPERTIES

| Property                      | ASTM Test Method | Value                         |
|-------------------------------|------------------|-------------------------------|
| Compressive Strength @ 10%    | ASTM C165        | 936 PSF                       |
| Tensile Strength              | ASTM C209        | 155 PSF                       |
| Moisture Absorption           | ASTM C209        | 0.50% By Volume               |
| Moisture Adsorption           | ASTM C553        | 0.03% By Volume               |
| Sound Absorption              | ASTM C423        | NRC – 0.80                    |
| Deflection                    | ASTM E759        | No Delamination               |
| Thermal Performance (R Value) | ASTM C158        | 4.2 (per inch)                |
| Corrosion & Fungi Resistance  | ASTM C665        | Non Corrosive/No Fungi Growth |
| Leachable Chlorides           | ASTM C871        | No Leachable Chlorides        |
| Air Erosion                   | ASTM C1071       | 0 @ 5800 ft/min               |
| Fire Hazard Classification    | ASTM E136        | Non Combustible               |
| Flame Spread                  | ASTM E84         | 0 (Class A)                   |
| Smoke Developed               | ASTM E84         | 0 (Class A)                   |



Other Albi DriClad Literature

- Albi DriClad Long Form Guide Specification
- Albi Fireproofing Catalog
- Albi DriClad Field Application Manual

Also inquire about these fireproofing products from Albi:

### Albi Clad 800

Intumescent fireproofing, withstands severe weathering and abuse

### Albi Clad TF

Water-based, thin-film intumescent fireproofing for exposed interior structural steel



## ALBI MANUFACTURING

For more than four decades, Albi fireproofing materials have demonstrated superior performance and reliability under a range of extreme environments worldwide. These proprietary formulations also meet global building codes and insurance requirements. Lightweight Albi materials provide long-term protection, outstanding durability, aesthetic properties and are completely free from asbestos.



**Albi Manufacturing**  
**Division of StanChem, Inc.**  
 401 Berlin Street  
 East Berlin, Connecticut 06023 U.S.A.  
 Tel: (860) 828-0571  
 Fax: (860) 828-3297  
[www.albi.com](http://www.albi.com)

**CITEX Limited<sup>1</sup>**  
 71-75 High Street  
 Chislehurst, Kent BR7 5AG  
 United Kingdom  
 Tel / Fax 44 181 467 2606

<sup>1</sup> A wholly-owned subsidiary of StanChem, Inc.