



# KBS FR Caulking



## Installation recommendations

### **KBS FR Caulking**

Fire Retardant Intumescent Caulk

**KBS FR Caulking** is used to seal electrical single cables or cable bundles, plastic pipes, steel and copper pipes which penetrate fire rated walls and floors.

**KBS FR Caulking** has intumescent properties causing it to expand in volume when exposed to fire and forms an insulating foam which resists the passage of smoke and fire.

### **Application Recommendation for electrical cables, plastic pipes, steel and copper pipes Installation in wall or floor.**

Before applying **KBS FR Caulking**, dirt, dust or oil have to be removed. Dry and absorbent surfaces should be wetted with water prior to application.

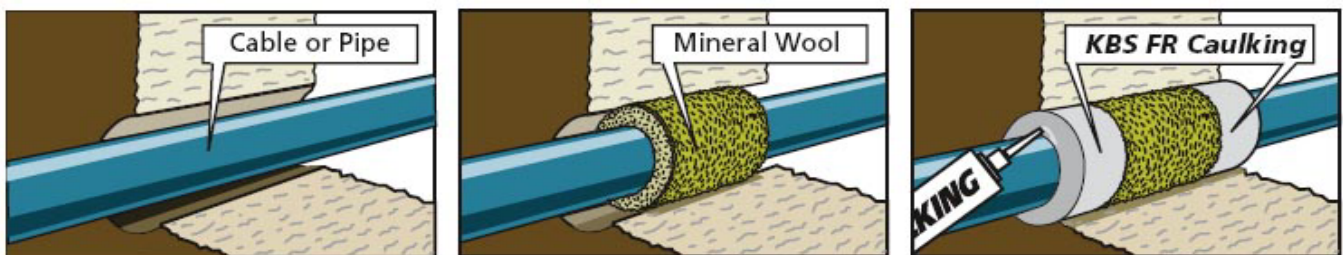
The space around the cables or pipes must be plugged with non combustible loose mineral wool. Then **KBS FR Caulking** is pressed out of the cartridge to obtain a tight seal on both sides of the penetration.

The surface of **KBS FR Caulking** can be smoothed by means of a wet brush.

### **KBS FR Caulking:**

annular space: min. 1/2" (13mm), max. 1 1/2" (38mm).

depth : min. 5/8" (16mm).



Being a water based material, application tools may be cleaned with water after use.

Drying time of **KBS FR Caulking** depends from temperature and humidity, a 1/5" thick layer is dry after 2 weeks ( 23°C / 50 % ).

**KBS FR Caulking** is resistant to humidity and moisture.

Application temperatures should be at least 5 ° C.

### **Safety Instructions:**

User friendly - solvent free, does not contain asbestos or halogens.

No special requirements, rubber gloves and safety goggles recommended, see MSDS

**KBS Passive Fire Pty. Ltd.**

**Australia Canada**

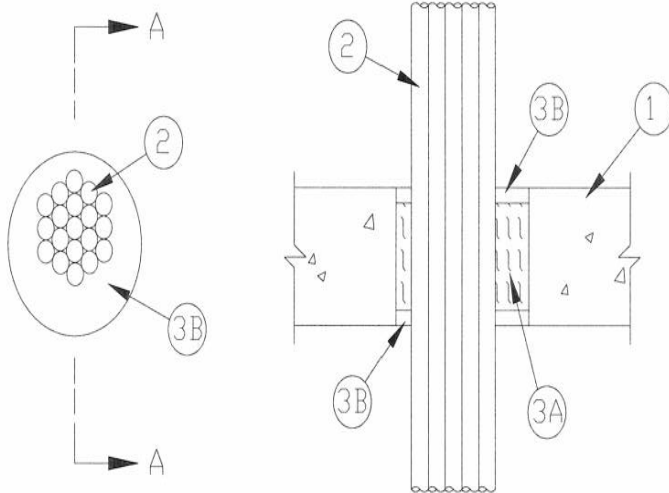
P: 61 2 9969 7100 P: 1 604 941 1001 E: [mail@KBSpassivefi re.com](mailto:mail@KBSpassivefi re.com)

F: 61 2 9969 7200 F: 1 604 941 1029 W: [www.KBSpassivefi re.com](http://www.KBSpassivefi re.com)

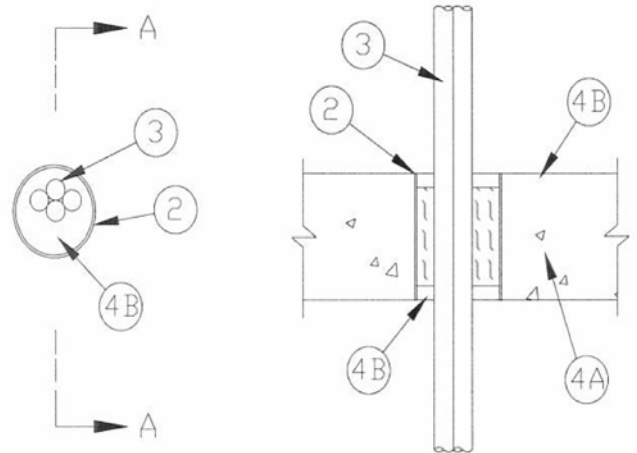


# KBS FR Caulking

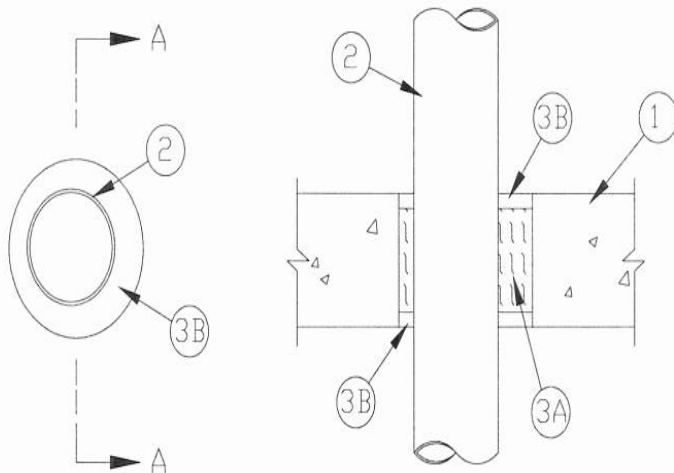
## Installation recommendations



## Cable Installation



## Cable installation



## Pipe Installation

The above data, particularly the recommendations for the application and use of our products are based on our knowledge and experience. Due to different materials and conditions of application, which are beyond our control, we recommend in any case to carry out sufficient tests in order to ensure that our products are suitable for the intended processes and applications. Therefore, any liability for such recommendations or any oral advice is expressly excluded unless we have acted wilfully or by gross negligence.

**KBS Passive Fire Pty. Ltd.**

**Australia Canada**

P: 61 2 9969 7100 P: 1 604 941 1001 E: [mail@KBSpassivefi re.com](mailto:mail@KBSpassivefi re.com)

F: 61 2 9969 7200 F: 1 604 941 1029 W: [www.KBSpassivefi re.com](http://www.KBSpassivefi re.com)