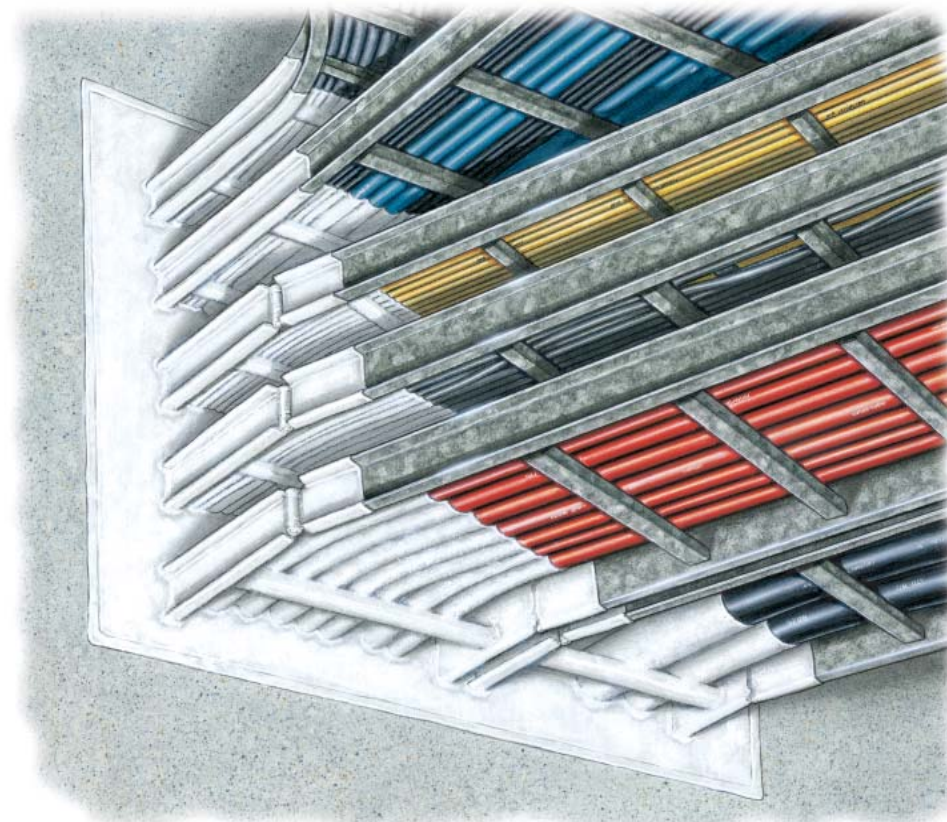
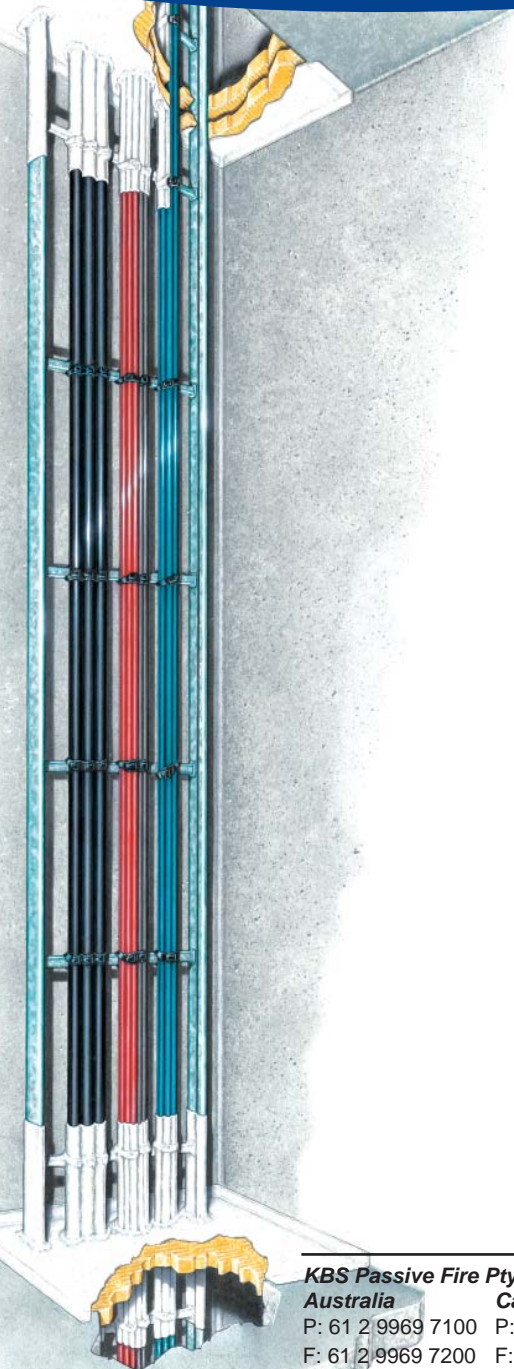


KBS PANEL SEAL



RECOMMENDED INSTALLATION METHODS



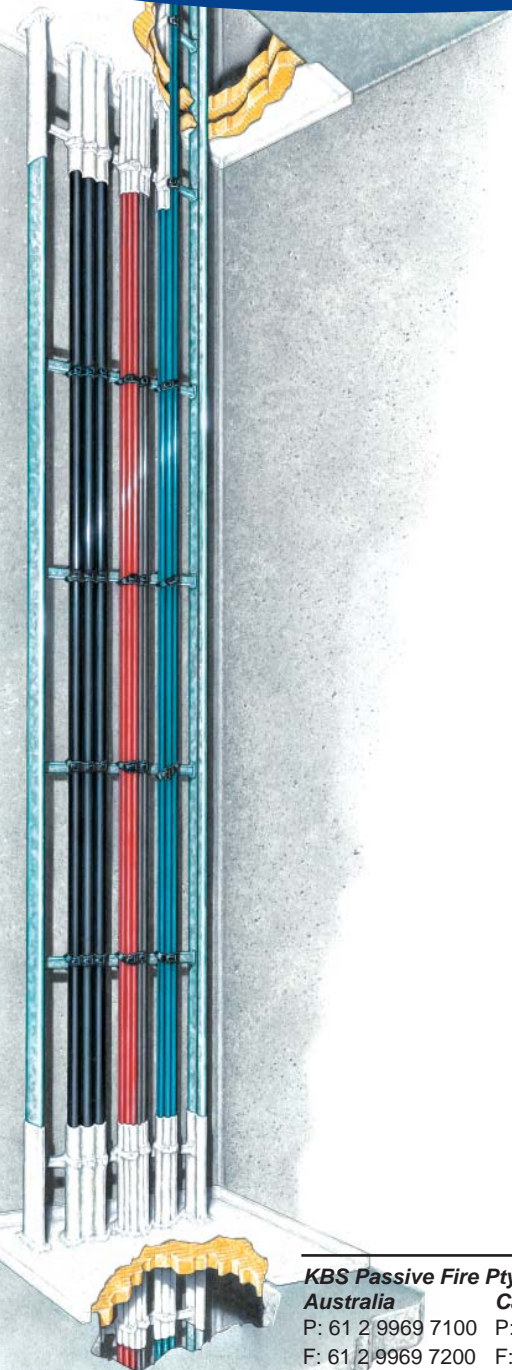
KBS Passive Fire Pty. Ltd.

Australia

P: 61 2 9969 7100 P: 1 604 941 1001 E: mail@KBSpassivefire.com

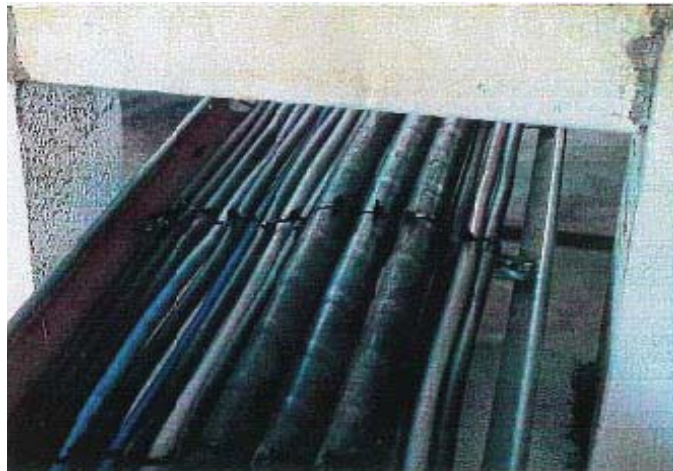
F: 61 2 9969 7200 F: 1 604 941 1029 W: www.KBSpassivefire.com

Canada



Surface Preparation

Cables in the vicinity of the penetration should be free of oil and dust. Thorough cleaning of the cables is not required. Oil and grease should be removed with dry rags - no solvent! The best way to remove heavier layers of dust is to use a broom or vacuum cleaner.



Penetration ready for sealing

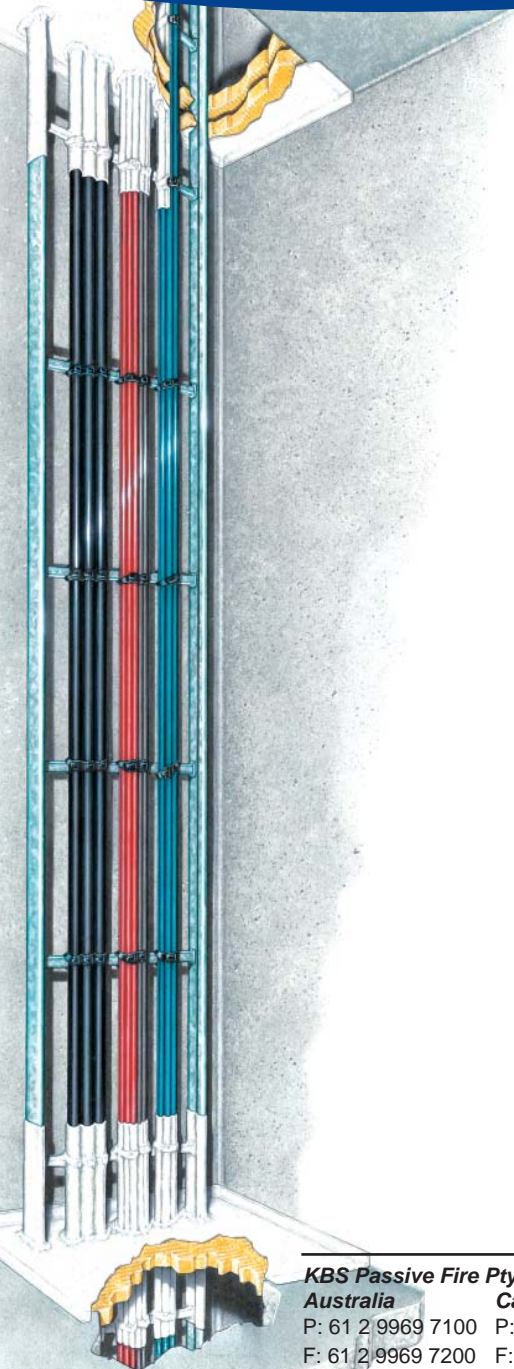
KBS Passive Fire Pty. Ltd.

Australia

Canada

P: 61 2 9969 7100 P: 1 604 941 1001 E: mail@KBSpassivefire.com

F: 61 2 9969 7200 F: 1 604 941 1029 W: www.KBSpassivefire.com

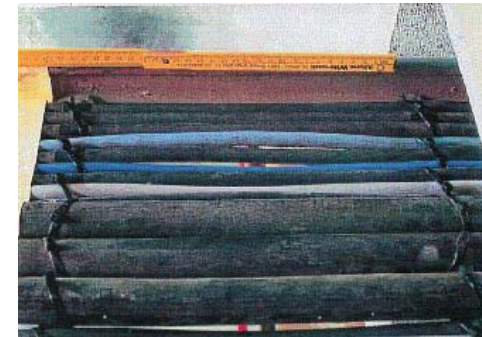


Wall and Floor Installation

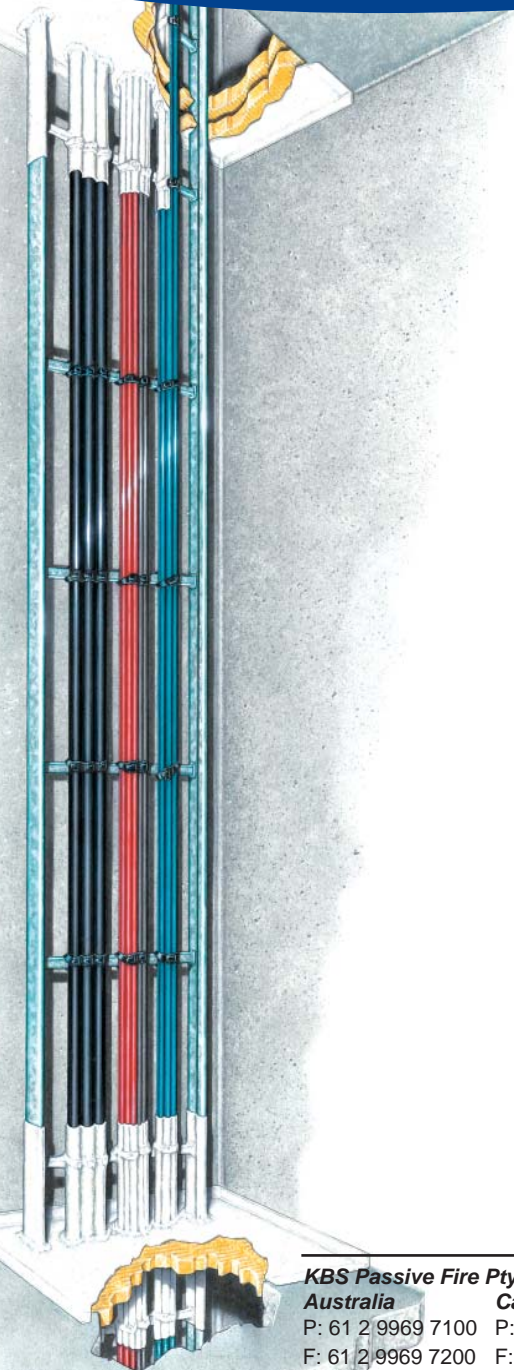
1. Take exact measurements of the opening.
2. Transfer the measurements onto the precoated or uncoated panel.
3. Cut the panel slightly oversize on all sides so that the panel piece must be forced in with some pressure. This will ensure the panel can stay in place without support.
4. Apply KBS Cable Coating generously to the inside of the opening and the cables - as shown. Brush edges of mineral wall with KBS Cable Coating.
5. Push the first panel (do the largest one first) into place (the still-wet Cable Coating acts as an adhesive). It must fit snugly and tightly to stay in place until coating is dry.
6. Fit other pieces as shown on drawing until all panel sections are in place.
7. Use KBS Cable Coating to fill all remaining voids. Where the opening is too large stuff with mineral wool first before spraying or brushing.
8. If panels have not been precoated use brush or spray to apply KBS Cable Coating (use only "brushable" with a brush) over the entire surface and at least 300mm over the edge of the opening.
9. For a One-Panel Seal coat both surfaces of the panel. Then coat cables and cable trays as well for the distance specified by the client (usually at least 300mm). For a smooth surface pass a wet brush (with water) over the entire surface.
10. For a Double-Panel Seal repeat the same procedure at floor level.



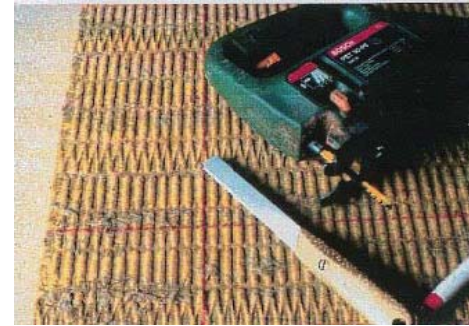
Using 30mm masking tape protect wall and floor openings.



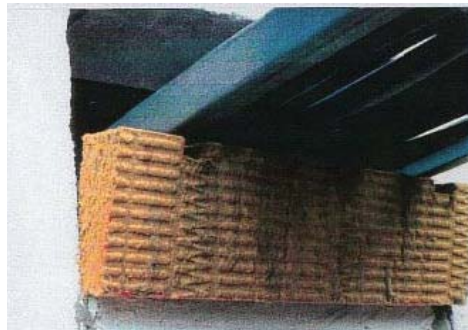
Use KBS Cable Coating to coat the cables to 300mm from the panel.



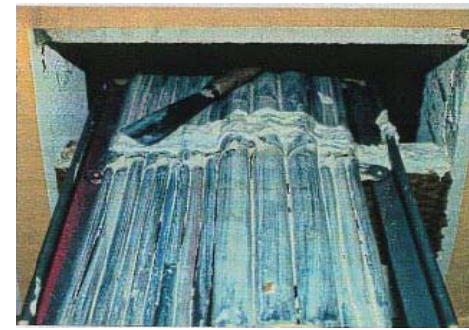
Apply a thin coat of KBS Cable Coating - brush or spray.



Measure uncoated panel and cut to size



Starting from the bottom and on the first cable tray coat all gaps between cables with KBS Cable Coating.



Apply KBS Cable Coating generously to Mineral Wool panels and to inside of opening.

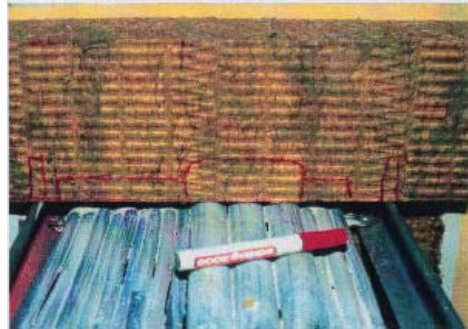
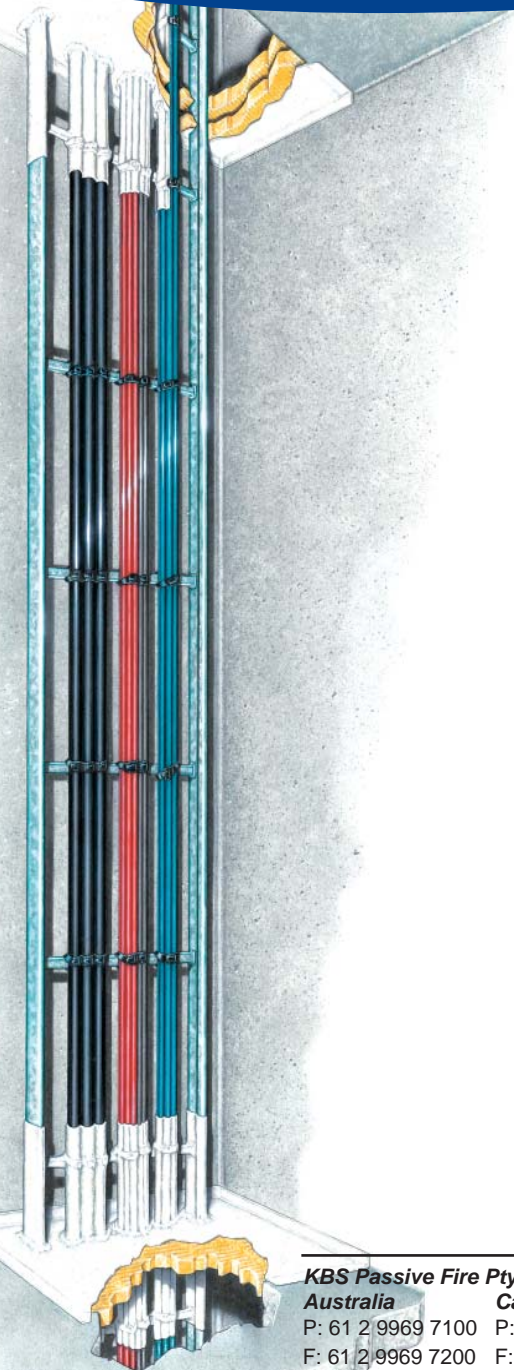
KBS Passive Fire Pty. Ltd.

Australia

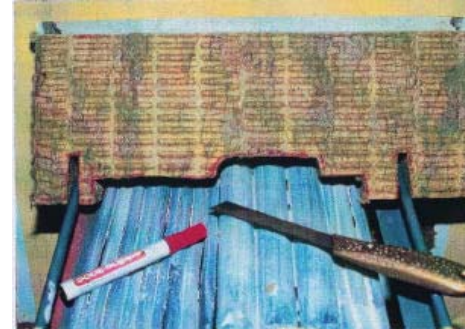
Canada

P: 61 2 9969 7100 P: 1 604 941 1001 E: mail@KBSpassivefire.com

F: 61 2 9969 7200 F: 1 604 941 1029 W: www.KBSpassivefire.com



Outline a rough area of where the cables will sit in the panel.



Easily cut through the panel.



Apply KBS Cable Coating generously to Mineral Wool panels and to inside of opening.



Push panel section into place - with a trowel or hammer.

KBS Passive Fire Pty. Ltd.

Australia

P: 61 2 9969 7100

Canada

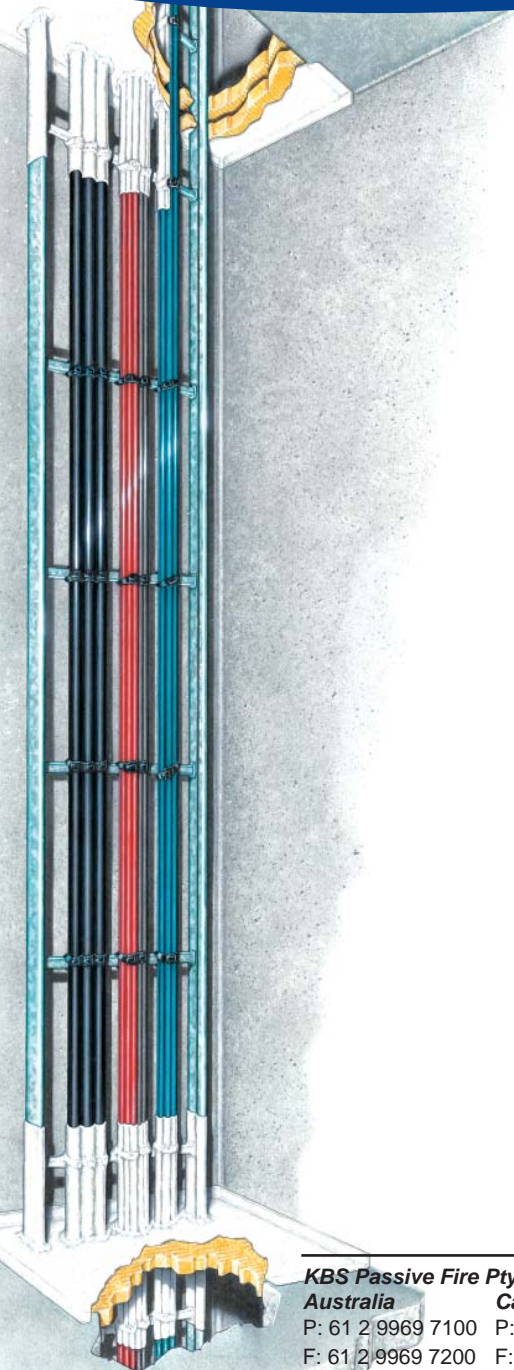
P: 1 604 941 1001

E: mail@KBSpassivefire.com

F: 61 2 9969 7200

F: 1 604 941 1029

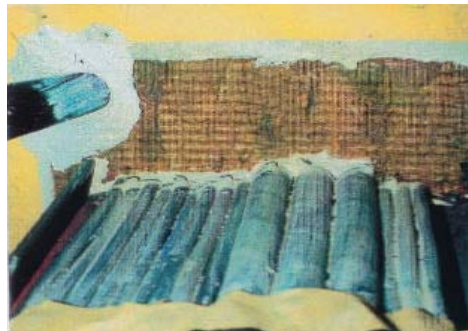
W: www.KBSpassivefire.com



Seal small gaps with KBS Sealant before complete final coat.



Use a wet brush to smooth the surface.



Spray or brush the panel with KBS Cable Coating. Remove masking tape. Check to ensure all cables are coated on all sides.

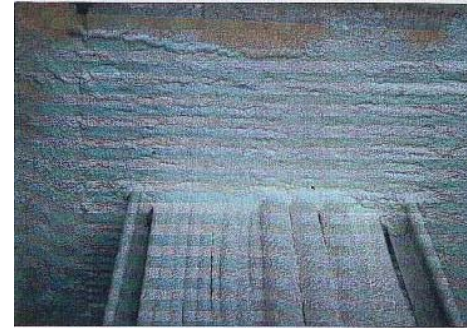
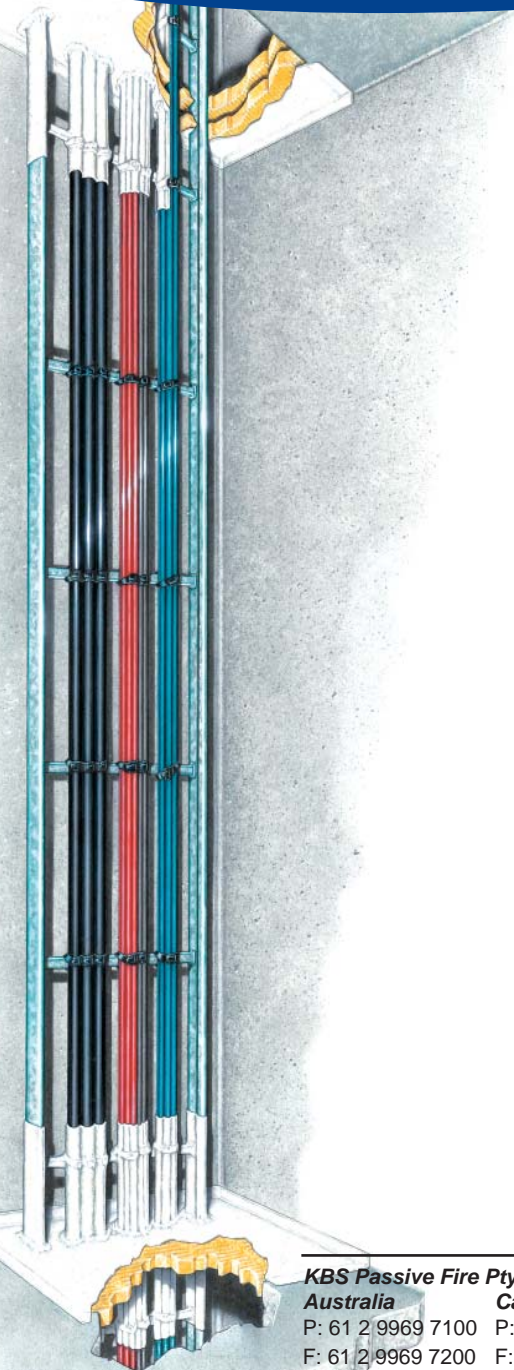
KBS Passive Fire Pty. Ltd.

Australia

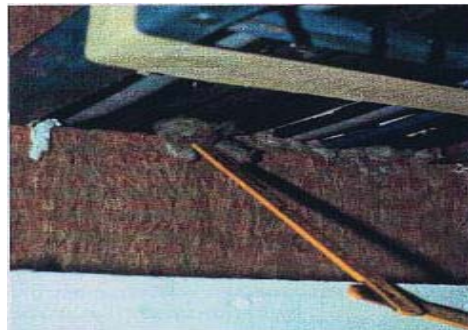
Canada

P: 61 2 9969 7100 P: 1 604 941 1001 E: mail@KBSpassivefire.com

F: 61 2 9969 7200 F: 1 604 941 1029 W: www.KBSpassivefire.com



Spray the panel with KBS Cable Coating. Remove masking tape. Check to ensure all cables are coated on all sides.



Working from the reverse side of the panel close all gaps with mineral wool and coat with KBS Cable Coating

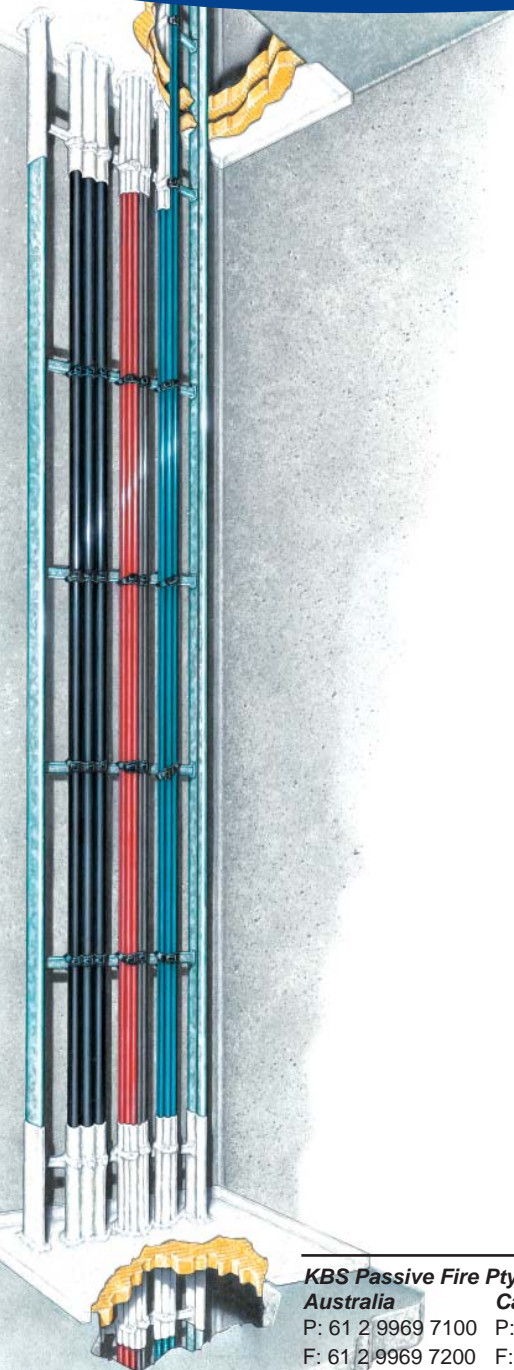
KBS Passive Fire Pty. Ltd.

Australia

Canada

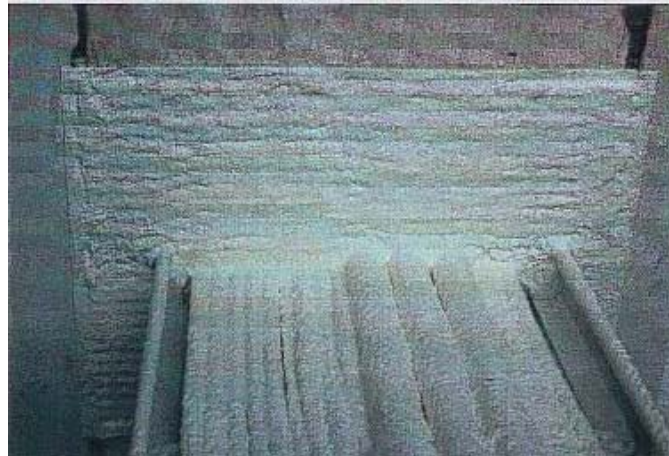
P: 61 2 9969 7100 P: 1 604 941 1001 E: mail@KBSpassivefire.com

F: 61 2 9969 7200 F: 1 604 941 1029 W: www.KBSpassivefire.com



NOTE: When installing a floor penetration seal with large openings (greater than 1 metre) the panel seal should be supported by angular steel bars.

NOTE: Do not walk on floor penetration seals!



KBS Panel seal - completed

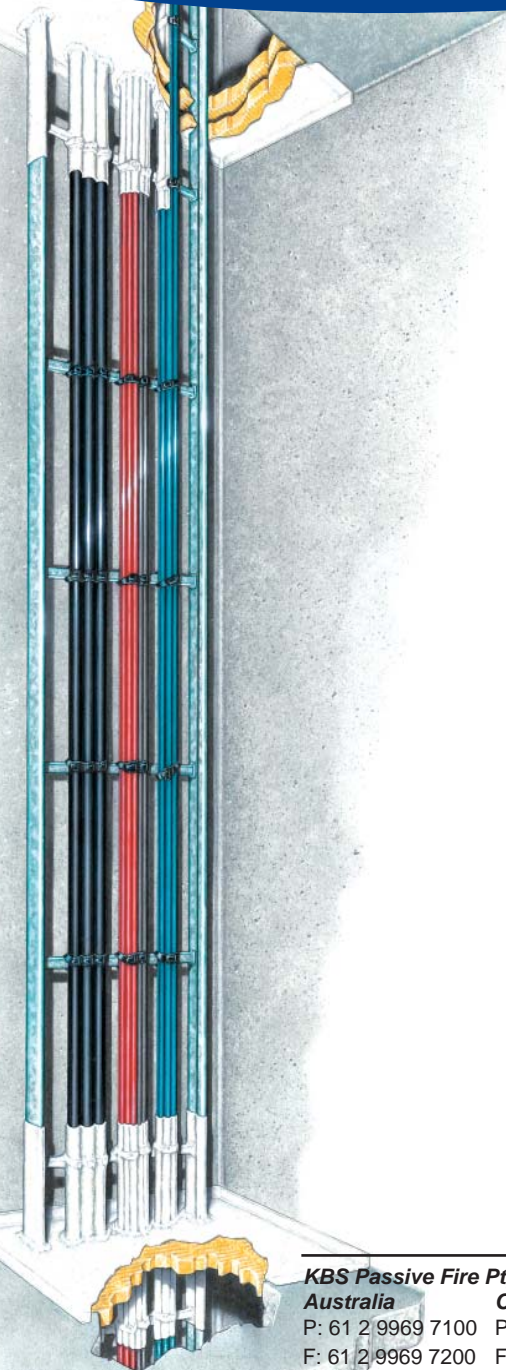
KBS Passive Fire Pty. Ltd.

Australia

Canada

P: 61 2 9969 7100 P: 1 604 941 1001 E: mail@KBSpassivefire.com

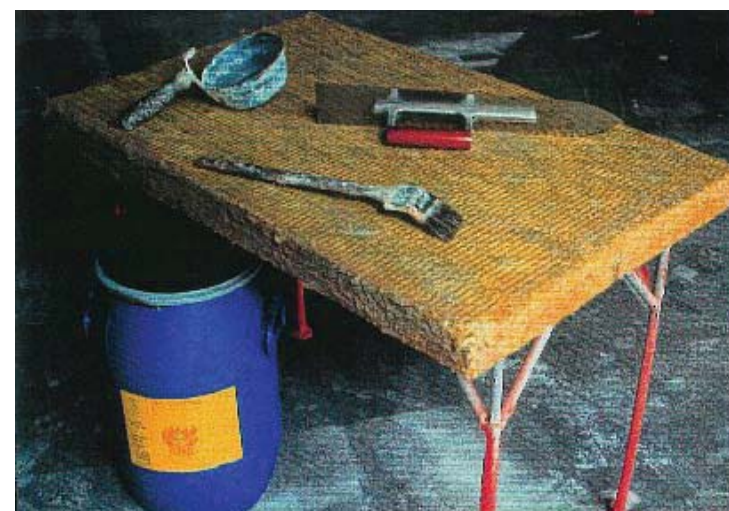
F: 61 2 9969 7200 F: 1 604 941 1029 W: www.KBSpassivefire.com



Precoating KBS Panel Seals

Many clients would rather not have “wet trades” in their facilities. In this case we recommend supplying precoated panels. Equipment Required-Mineral wool panels with density greater than 150 kgs/m³ with dimensions of 1000 X 600 X 60mm

- KBS Cable Coating - Brushable or Sprayable
- Measuring Cup
- Large steel trowel
- Large table
- Wall with large nails (or hanger pins) sticking out
- PE foil
- Brush



Required equipment for precoated panels

KBS Passive Fire Pty. Ltd.

Australia

P: 61 2 9969 7100

Canada

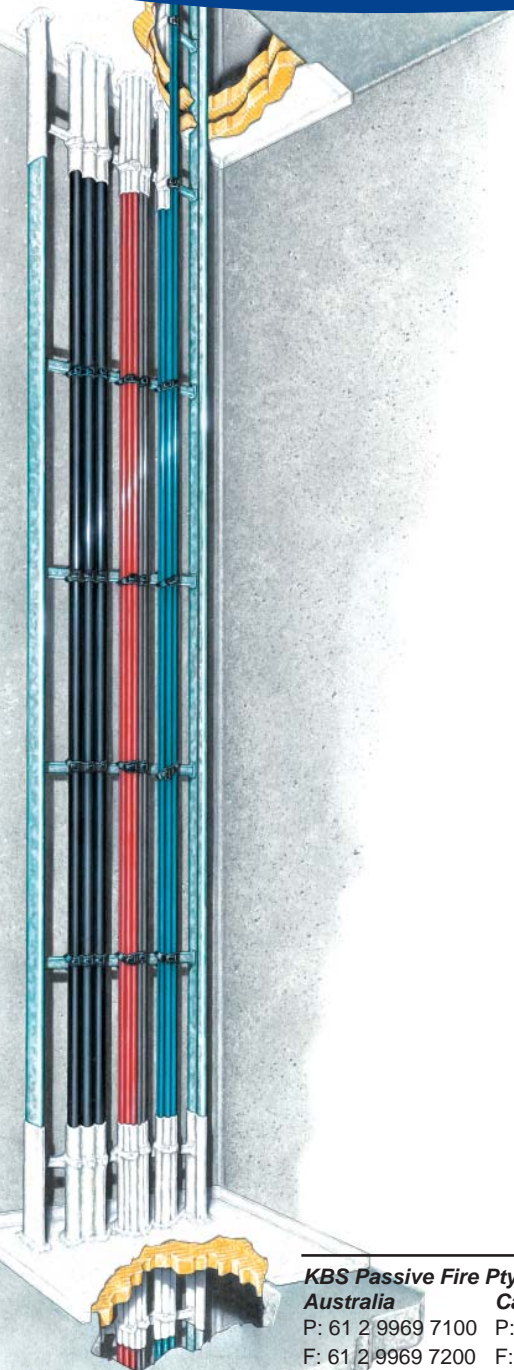
P: 1 604 941 1001

E: mail@KBSpassivefire.com

F: 61 2 9969 7200

F: 1 604 941 1029

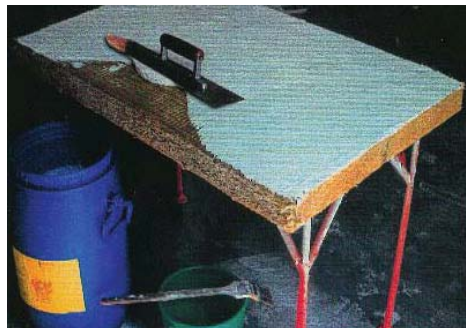
W: www.KBSpassivefire.com



Make up a measuring cup that holds the exact amount necessary to apply the 1.6mm thickness. Pour the coating into the centre of the panel and spread with the trowel.



Coat the panels with the KBS Cable Coating by spray or by trowel.



To achieve the required dry film thickness (1.6mm) you will require $3/\text{kg}/\text{m}^2$.



NOTE: Allow panels to dry before shipping! Allow three days in normal (10 - 40 °C) temperatures. The panels can be stacked vertically or horizontally. Use of the hanger pins or large nails sticking out of a wall is effective. For shipping place PE foil between each coated panel.

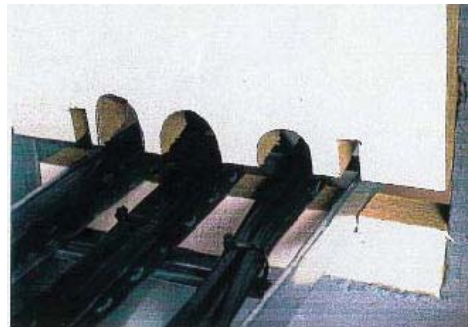
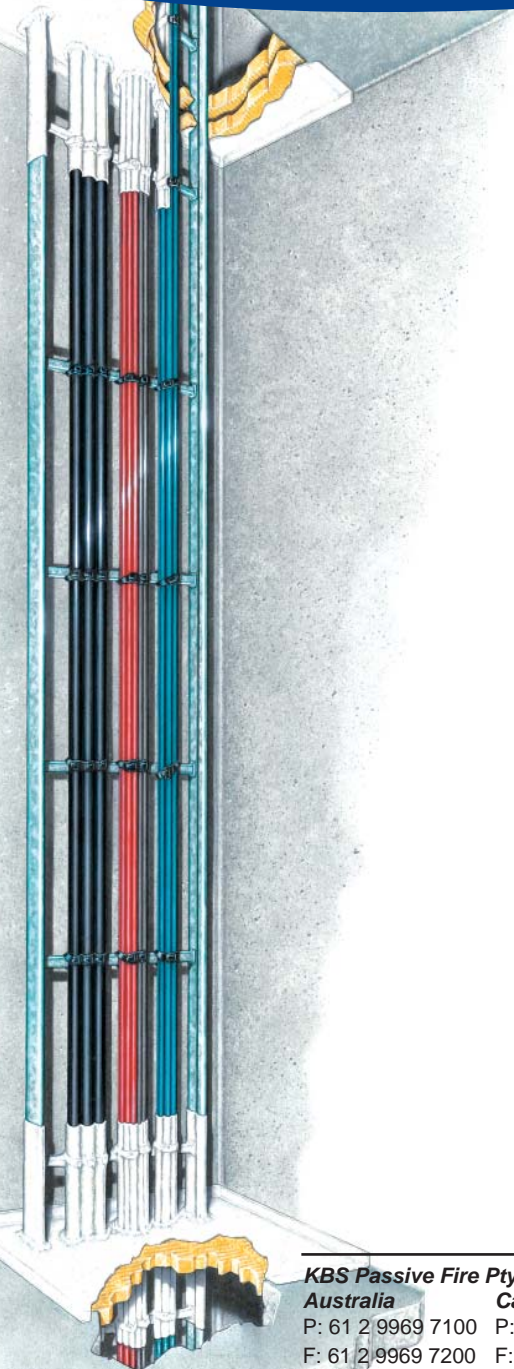
KBS Passive Fire Pty. Ltd.

Australia

Canada

P: 61 2 9969 7100 P: 1 604 941 1001 E: mail@KBSpassivefire.com

F: 61 2 9969 7200 F: 1 604 941 1029 W: www.KBSpassivefire.com



When using precoated panels you only need to coat the cables on site together with any voids around the panels and in the cables. You can also use KBS Sealant to fill the voids.

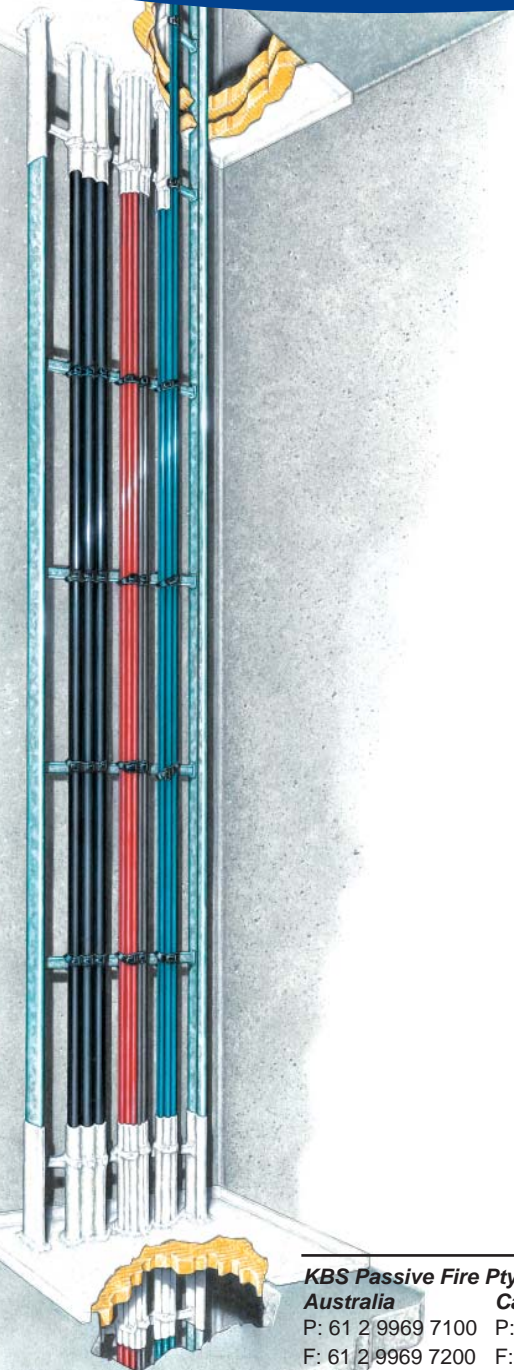
KBS Passive Fire Pty. Ltd.

Australia

Canada

P: 61 2 9969 7100 P: 1 604 941 1001 E: mail@KBSpassivefire.com

F: 61 2 9969 7200 F: 1 604 941 1029 W: www.KBSpassivefire.com



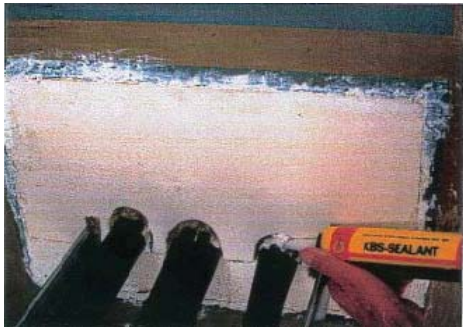
Placing pre-coated panel



Moving panel into place



Making sure all areas are taped and ready for coating



Sealing with KBS Sealant or brushable



Coating the areas around the panel



Coating the cables to complete the seal

The data contained in this document, particularly the recommendations for the application and use of KBS products are based on the manufacturer's knowledge and experience. Due to different materials and conditions of application, which are beyond our control, we recommend in any case to carry out sufficient tests in order to ensure that KBS products are suitable for the intended processes and applications. Therefore, any liability for such recommendations or any oral advice is expressly excluded unless we have acted wilfully or by gross negligence. It is always the responsibility of the Installer / purchaser to guarantee correct preparation, DFT (KBS Coatings) and thickness (KBS Penetration Seals) of all KBS Materials. KBS Passive Fire Pty. Ltd. is not responsible for installation or faulty installation. It is always the responsibility of the installer / purchaser to guarantee and certify the installation of materials.

KBS Passive Fire Pty. Ltd.

Australia

P: 61 2 9969 7100

Canada

P: 1 604 941 1001

E: mail@KBSpassivefire.com

F: 61 2 9969 7200

F: 1 604 941 1029

W: www.KBSpassivefire.com

Installation Methods - KBS Panel Seal